

Rotterdam Port Expansion

Buenos Aires, Argentina

Prof. H. Ligteringen

June 2004

1

Rotterdam Port Expansion

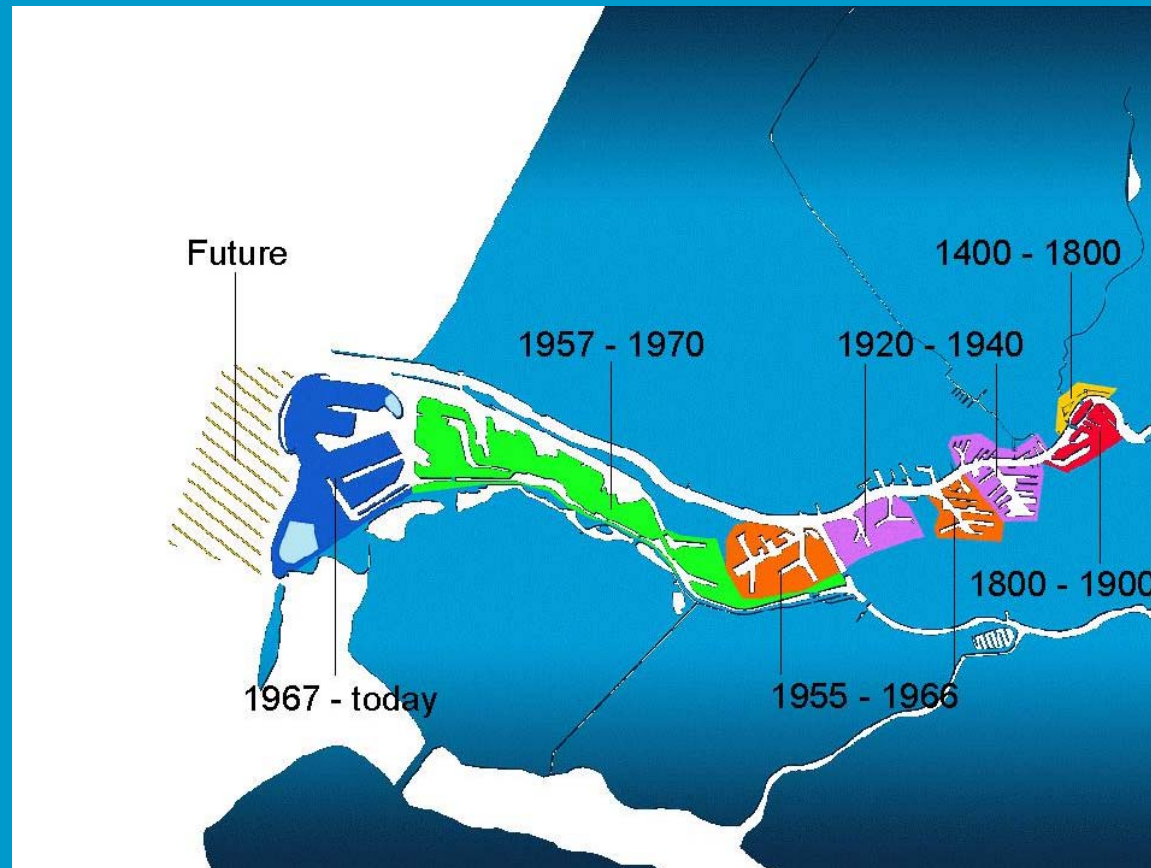
The Maasvlakte 2 Project

- History of the project
- Project studies
- Present status

History of the project

- Position of Port of Rotterdam in Western Europe

Historical Development Port of Rotterdam



June 14, 2004

4

Western Europe



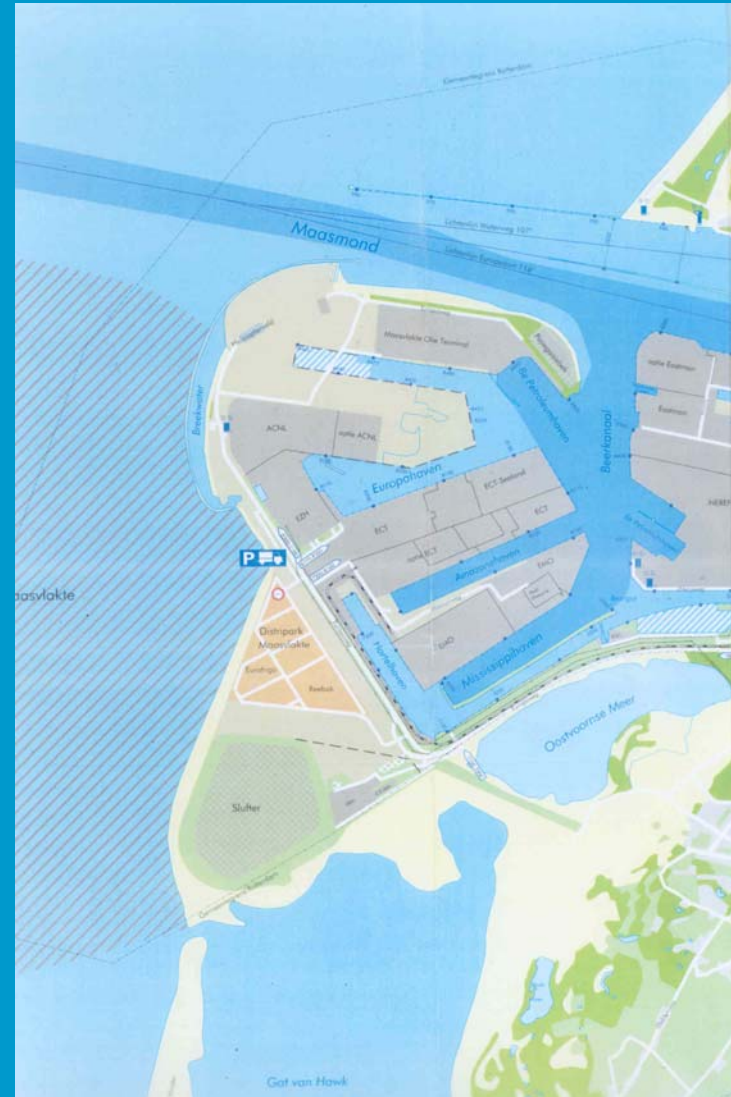
June 14, 2004

5

History of the project

- Position of Port of Rotterdam in Western Europe
- Existing Maasvlakte near saturation

Existing Maasvlakte



June 14, 2004

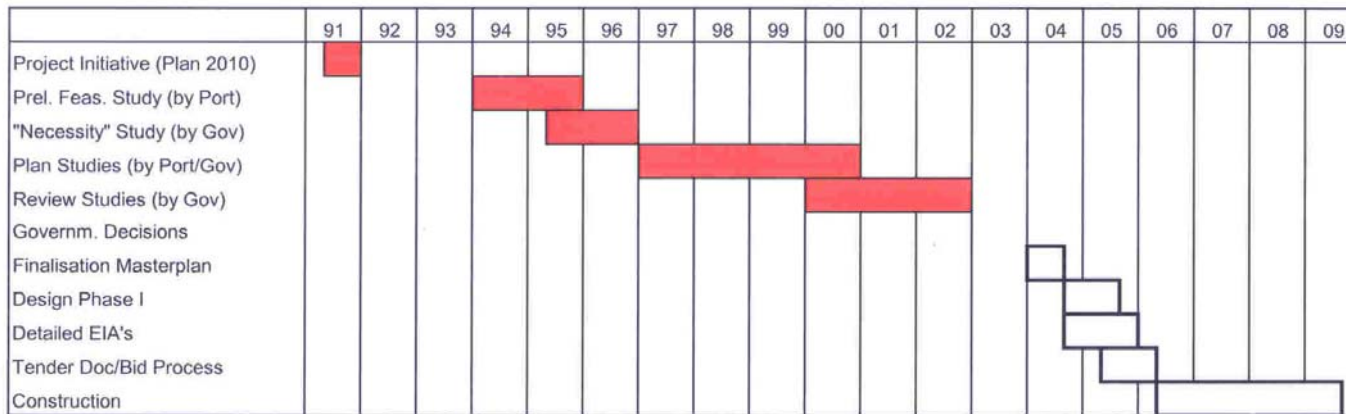
7

History of the project

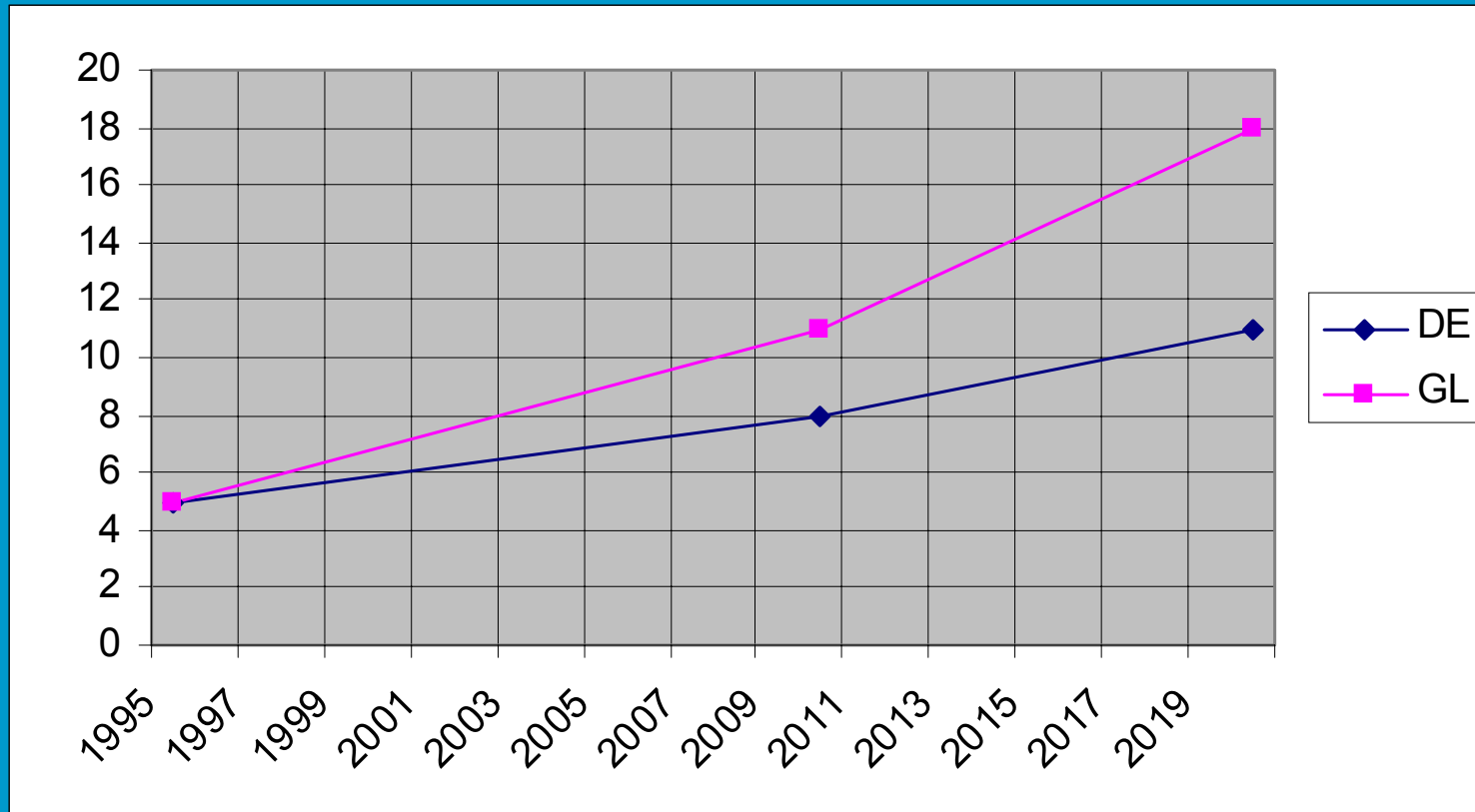
- Position of Port of Rotterdam in Western Europe
- Existing Maasvlakte near saturation
- Planning the next fase

Planning Process

Planning Process Maasvlakte 2



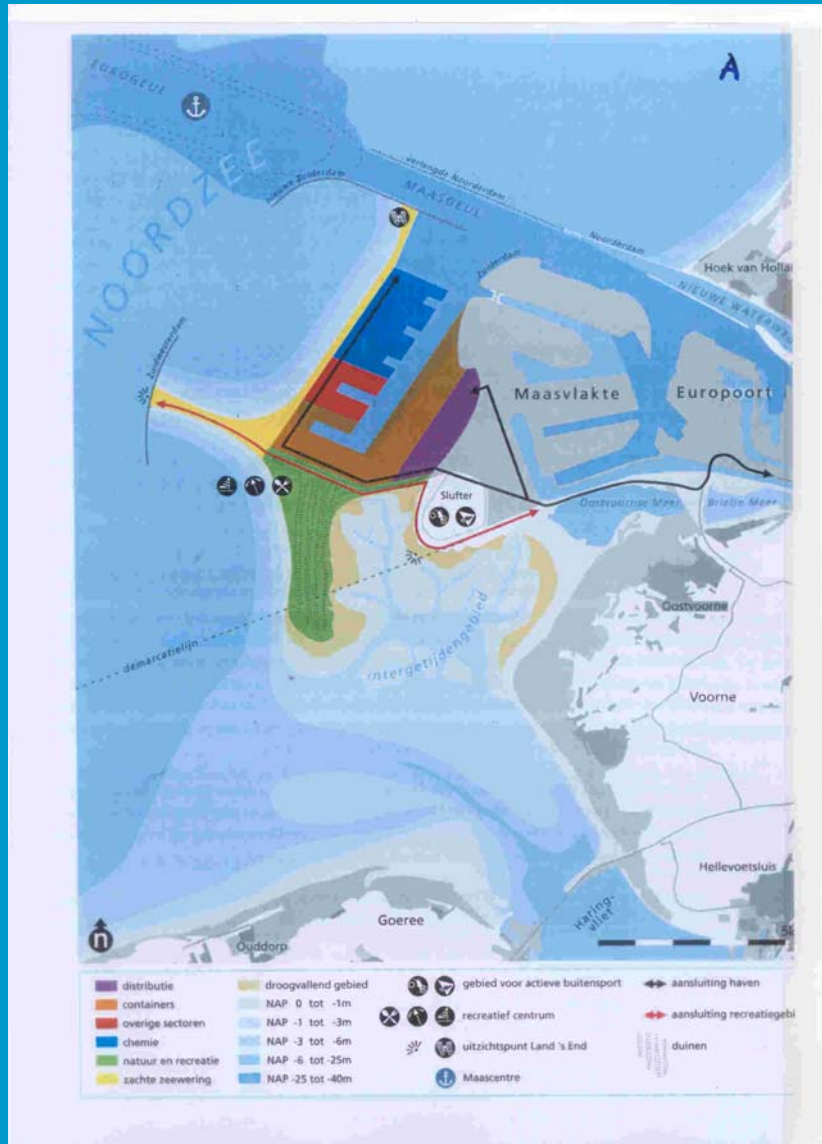
Forecast Container Troughput



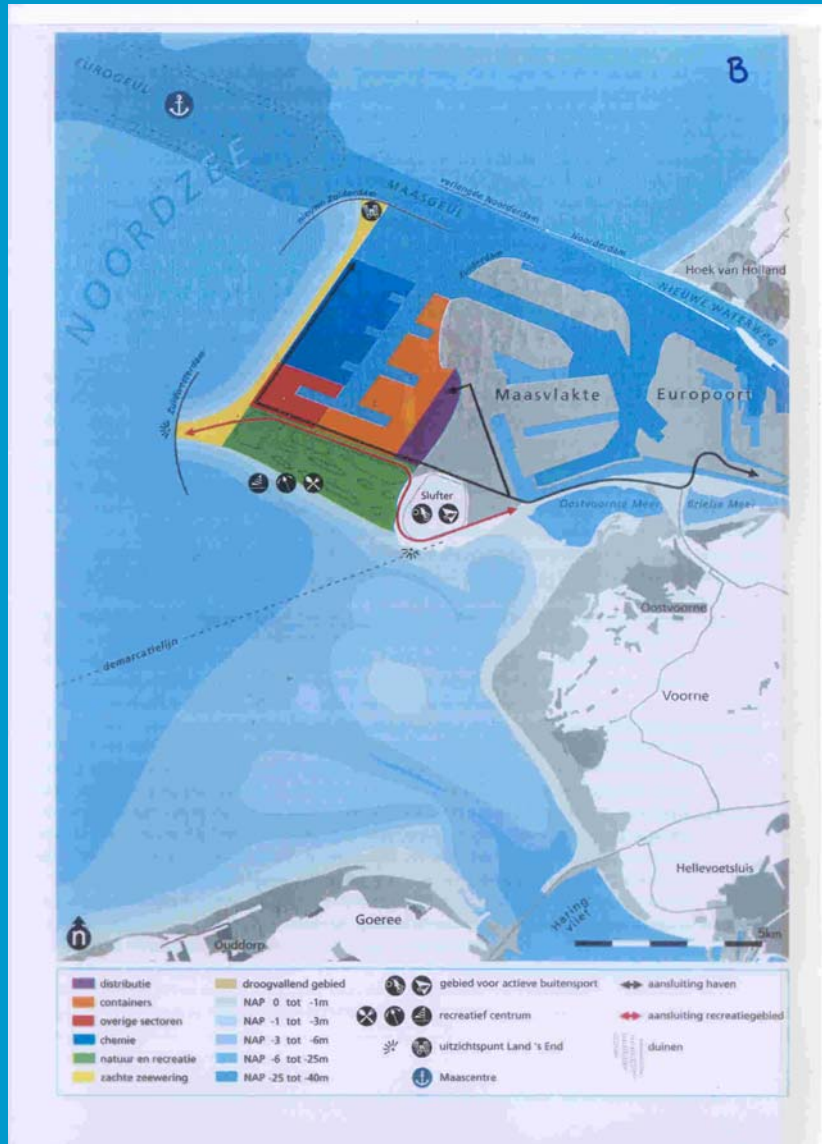
Lay-out Development

- 3 basic alternatives, varying in overall size, nautical conditions and costs.

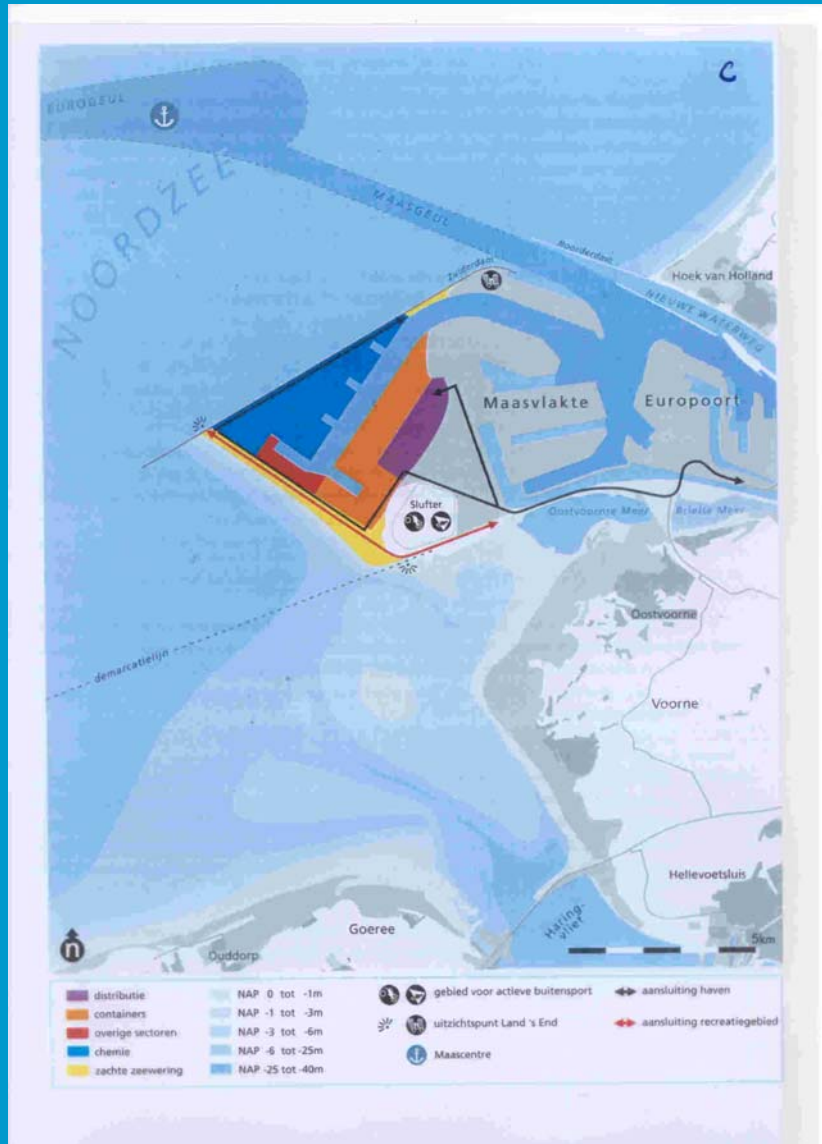
Basic Alt. A



Basic Alt. B



Basic Alt. C



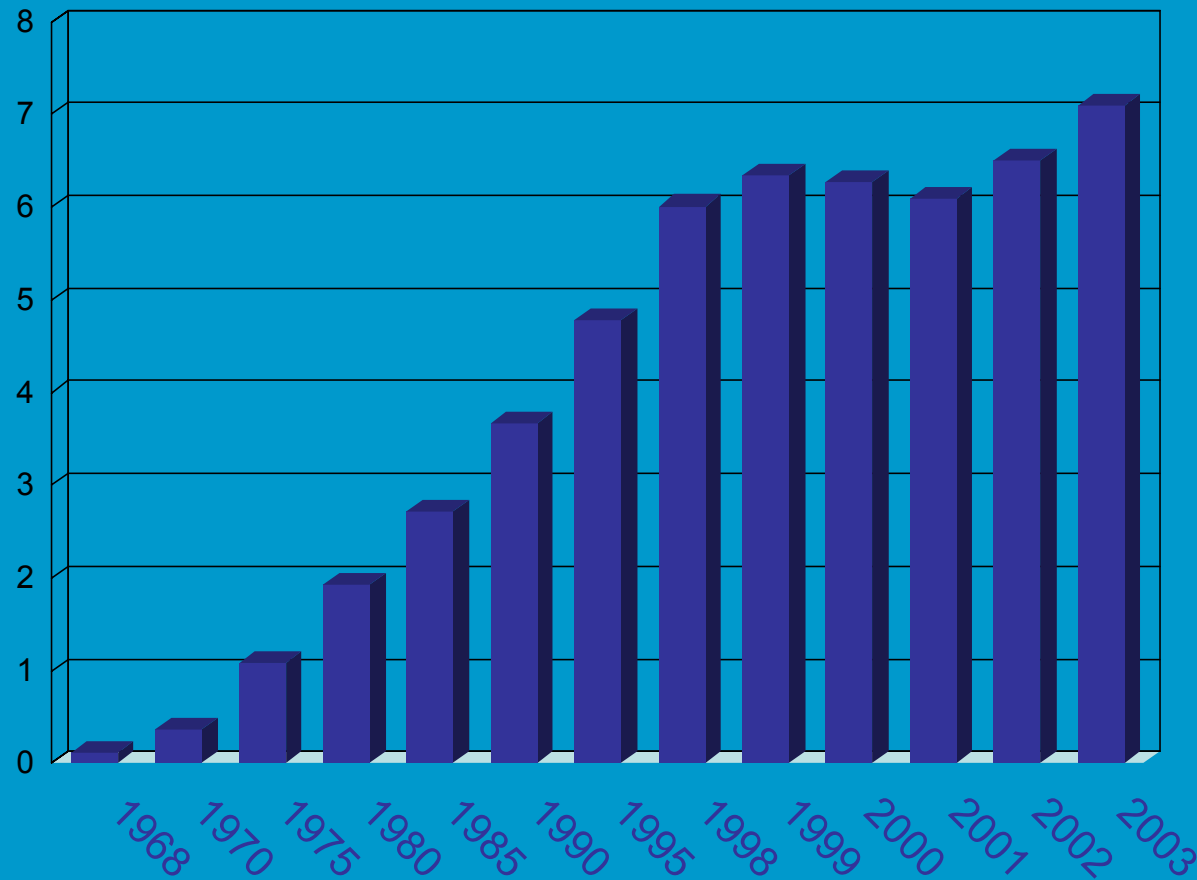
Lay-out Development

- 3 basic alternatives, varying in overall size, nautical conditions and costs.
- EIA carried out for maximum size
- Cost-Benefit Analysis (by Central Government) only positive for the minimum size

Present Status

- Actual container throughput
- Update projected throughput

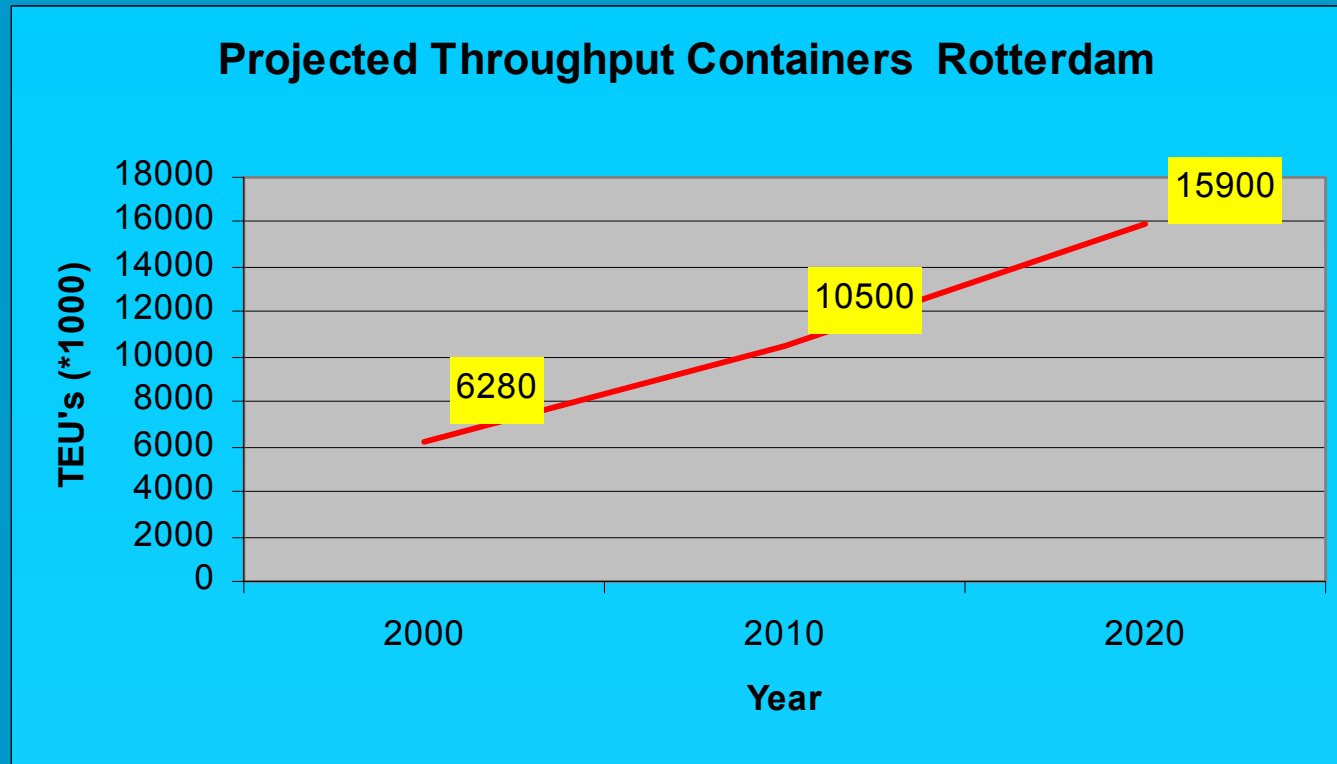
Container throughput Port of Rotterdam 1968 - 2003



June 14, 2004

17

Projections container throughput Rotterdam



Facilitate New Terminal Capacity

Facilitate the expected growth

- Maasvlakte 1:
 - Delta peninsula (ECT+APM):
 - Intensifying and extension terminals (DDW+APM)
==> 2,3 mil. TEU
 - Euromax (PONL/ECT) : 2,8 mil. TEU
- Maasvlakte 2:
 - Container terminals: 620 ha (26000 TEU/ha/yr)

Euromax terminal



June 14, 2004

20

Overview of Euromax 1



June 14, 2004

21

Euromax characteristics

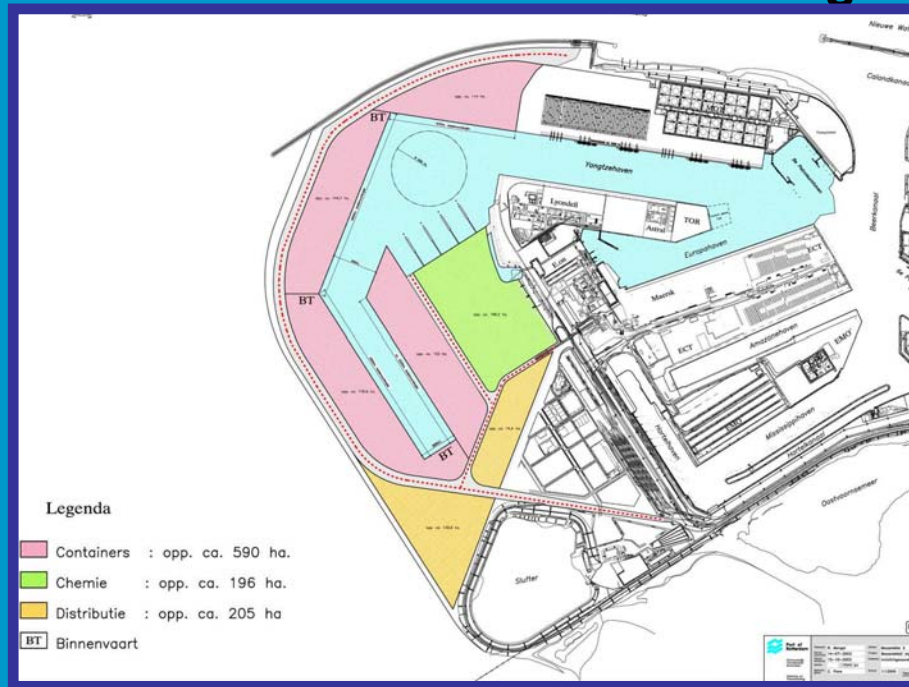
- Terminal surface: 125 hectares
- 2,350 meters of quay-wall
- Capacity 2.8 million TEU
- Good hinterland connections
 - 40% inland shipping
 - 40% road (connection to the A15)
 - 20% rail (connection to the Betuwe route)
- Phase 1 ready by 2007

Land reclamation/Maasvlakte 2

- Area: 1000 ha
- Cost: est. 2 billion US dollars
- Planning: operational in 2010/2011
- Design ship: Suez-max (Vossnack)
 - 15500 TEU
 - Max. draught 17/18m

Latest Developments

New Second Maasvlakte design



Alternative 1: chemie cluster

Alternative 2: container cluster

